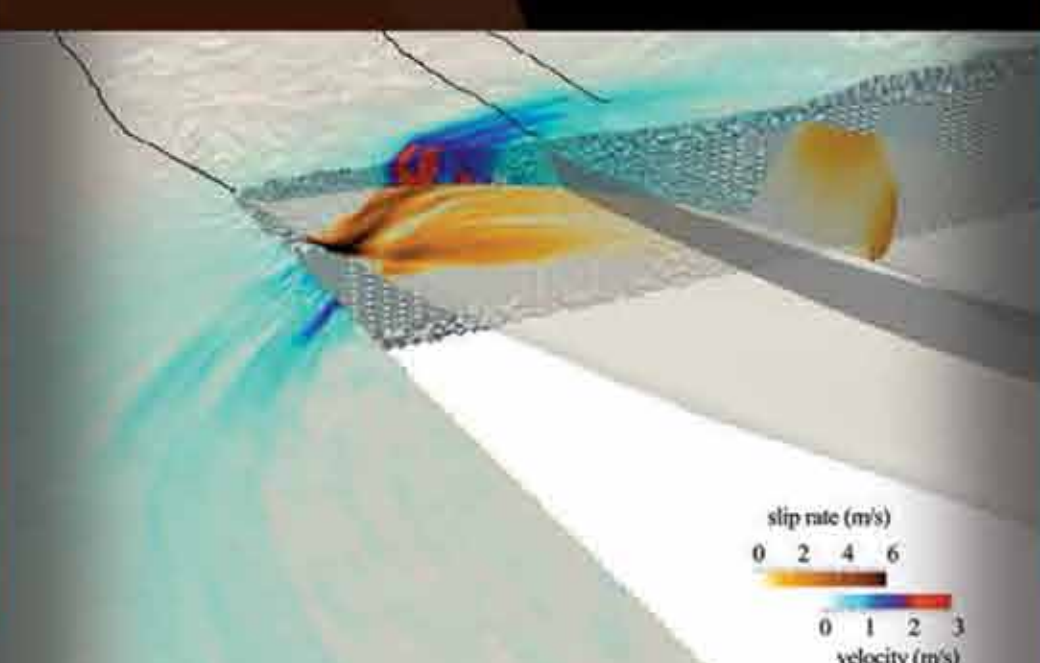
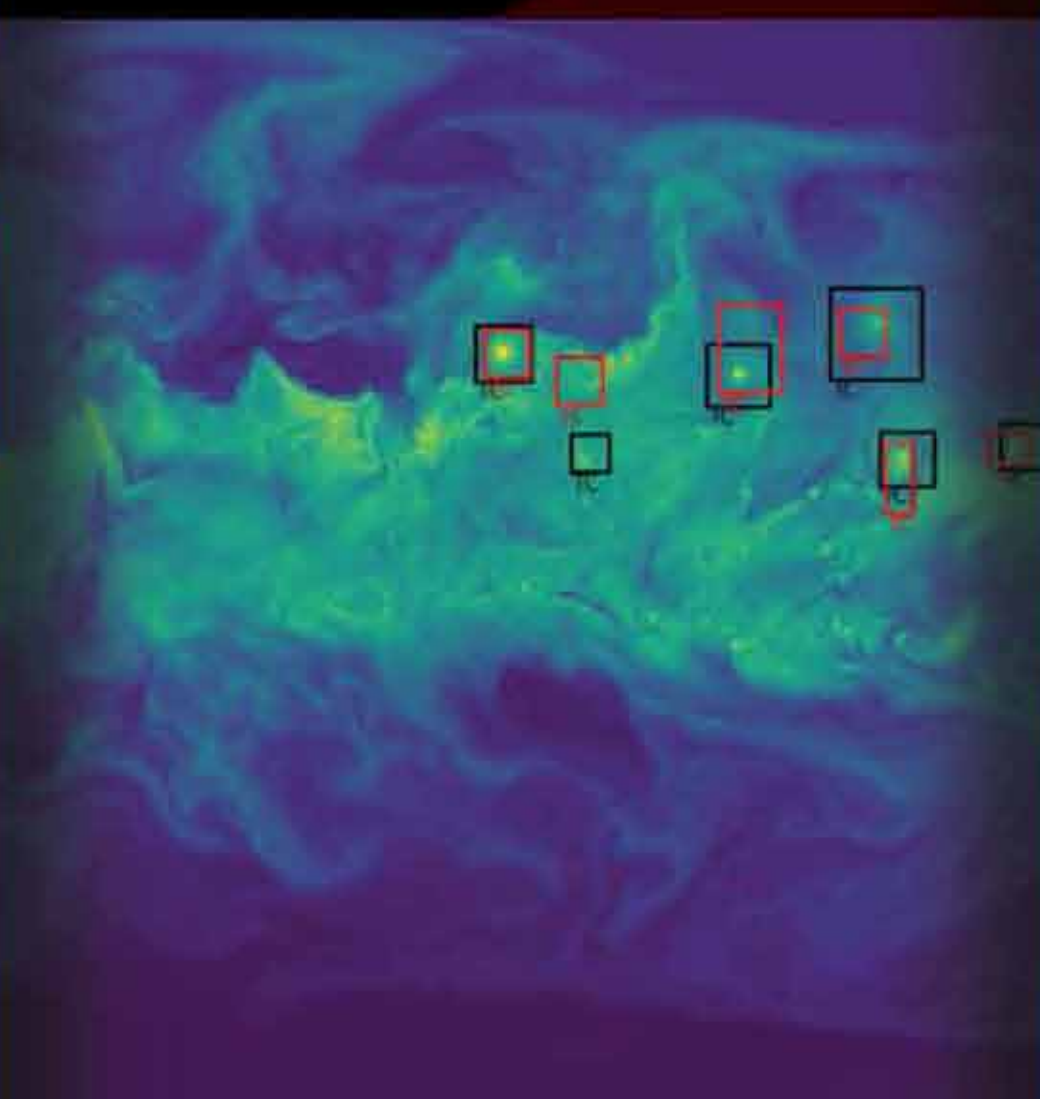


# SC17

2017 Chair  
Bernd Mohr  
Denver, CO



## 2017

Top-ten supercomputers:

- Sunway TaihuLight
- Tianhe-2A
- Piz Daint
- Gyoukou
- Titan
- Sequoia
- Trinity
- Cori
- Oakforest-PACS
- K computer

Notable systems mentioned in top cited papers:

- Sunway TaihuLight
- SuperMUC
- ZettaScaler

Notable processors/ architectures:

- Intel Xeon/Xeon Phis

Notable HW/SW architecture topics:

- GPU/Multi-GPU
- NVM/NVM-cache
- User/Cloud environments
- HPCG Benchmark
- ADERDG

Notable application areas:

- deep learning
- earthquakes/earthquake hazards
- computational seismology
- user environment/user tools
- Benchmark suites
- SC Reproducibility Initiative

**Parallelization of the Particle-In-Cell Monte Carlo Collision (PIC-MCC) Algorithm for Plasma Simulation on Intel MIC Xeon Phi Architecture**

Group in Computational Science and HPC, DA-ACCT, INRIA

Kaveh Shah, Anantha Pinaris, Murali Shah and Shrinani Choudhury

**HyperLoom**

A Platform for Defining and Executing Scientific Pipelines in Large-Scale Distributed Environments

GOAL: Efficient end-to-end data processing in large-scale distributed environments made simple.

